



Welcome to BRITA VIVREAU
VIVREAU Bottler



VIVREAU Bottler

BRITA. The total solutions provider.

BRITA provides end-to-end solutions to your drinking water needs

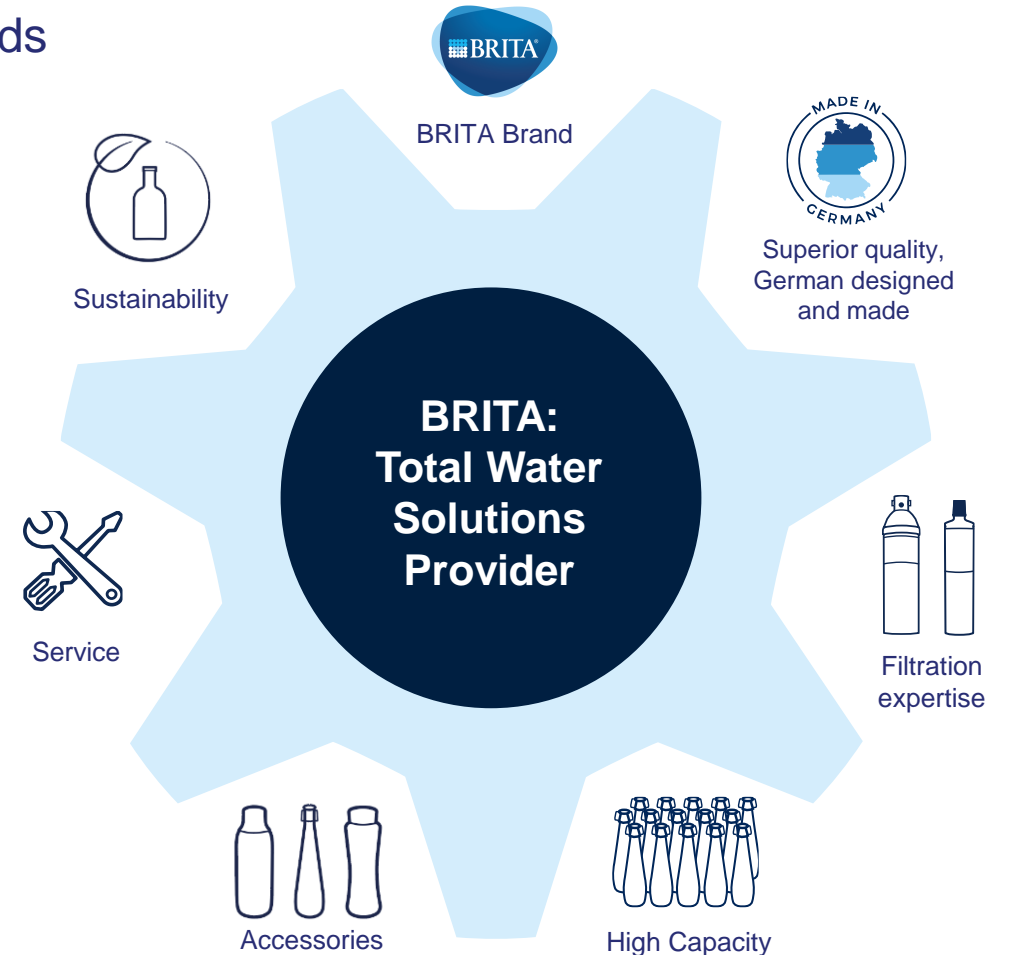
If you value quality and peace of mind, wish to eliminate single use plastics, bolster your bottom line or simply serve and enjoy great tasting water, BRITA is your partner and total solutions provider.

At BRITA, water is our passion. We have channelled over half a century's expertise into our BRITA filtration and treatment technologies, and into each and every one of our BRITA VIVREAU dispensers.

The BRITA filtration legacy guarantees great-tasting water, encompassing expert engineering to ensure expert and regional filtration.

Our products are reliable, and dependable with high-capacity dispensing capabilities allowing for consistent performance during peak periods of use.

From regional analysis of your water and installation of your dispenser, to maintenance via certified service technicians, and branded bottles BRITA is your partner and total solutions provider.



VIVREAU Bottler

A high capacity dispenser solution



Easy-to-use lever-type dispenser tap



Flow rate up to 3 l/min

Stainless steel tap

Easy-to-clean removable nozzles

Ideal for e.g.

- Back of house pantry for conferences, banquets or restaurants
- Bars
- Breakfast buffets

Benefits:

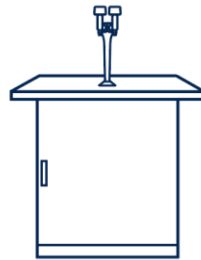
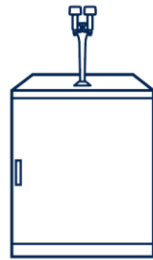
- Dispenses high volumes of chilled still and sparkling water on demand
- High-performance ice-bank refrigeration for chilled water at consistently low temperatures
- Capacity: 80 l/h or 180 l/h
- Can be used with a stylish range of BRITA glass bottles that can be re-filled for a cost effective filtered water solution
- Integrated flush fitting drip tray included at no additional cost
- Space saving design

3 Installation options

- Countertop,
- Floorstanding
- Tap system



VIVREAU Bottler Technical data



Model	BRITA VIVREAU Bottler 101	BRITA VIVREAU Bottler 102	BRITA VIVREAU Bottler 104	BRITA VIVREAU Bottler 105
Design / Type	Floorstanding	Floorstanding semi integrated	Countertop	Tap system under bench integrated
Types of water				
Chilled still	•			
Sparkling	•			
Specification				
Cooling capacity	180 l/h		80 l/h	
Fits into base cabinet with the following dimensions (W x H x D)	-	-	-	600 x 800 x 600 mm
System dimensions (W x H x D)	595 x 850 x 590 mm (base cabinet only) 180 x 490 x 220 mm (tap) 595 x 1335 x 590 mm (total system)	595 x 850 x 590 mm (system cabinet) 180 x 490 x 220 mm (tap)	370 x 540 x 496 mm	360 x 440 x 360 mm (cooler carbonator) 180 x 490 x 220 mm (tap)
Dispensing height	325 mm			320 mm
Weight	74.5 kg (system) 2 kg (tap)		33.8 kg	35.4 kg (cooler carbonator) 2 kg (tap)
Max. power consumption	1150 W		1173 W	
Max. flow rate	3 l/min		2 l/min	
Product number				
	Bottler 101-2-FS-0 CU AU	Bottler 102-2-FS-0 CU AU	Bottler 104-2-CT-0 CU AU	Bottler 105-2-TS-0 CU AU
Item number	1023907	1023911	1023914	1023917

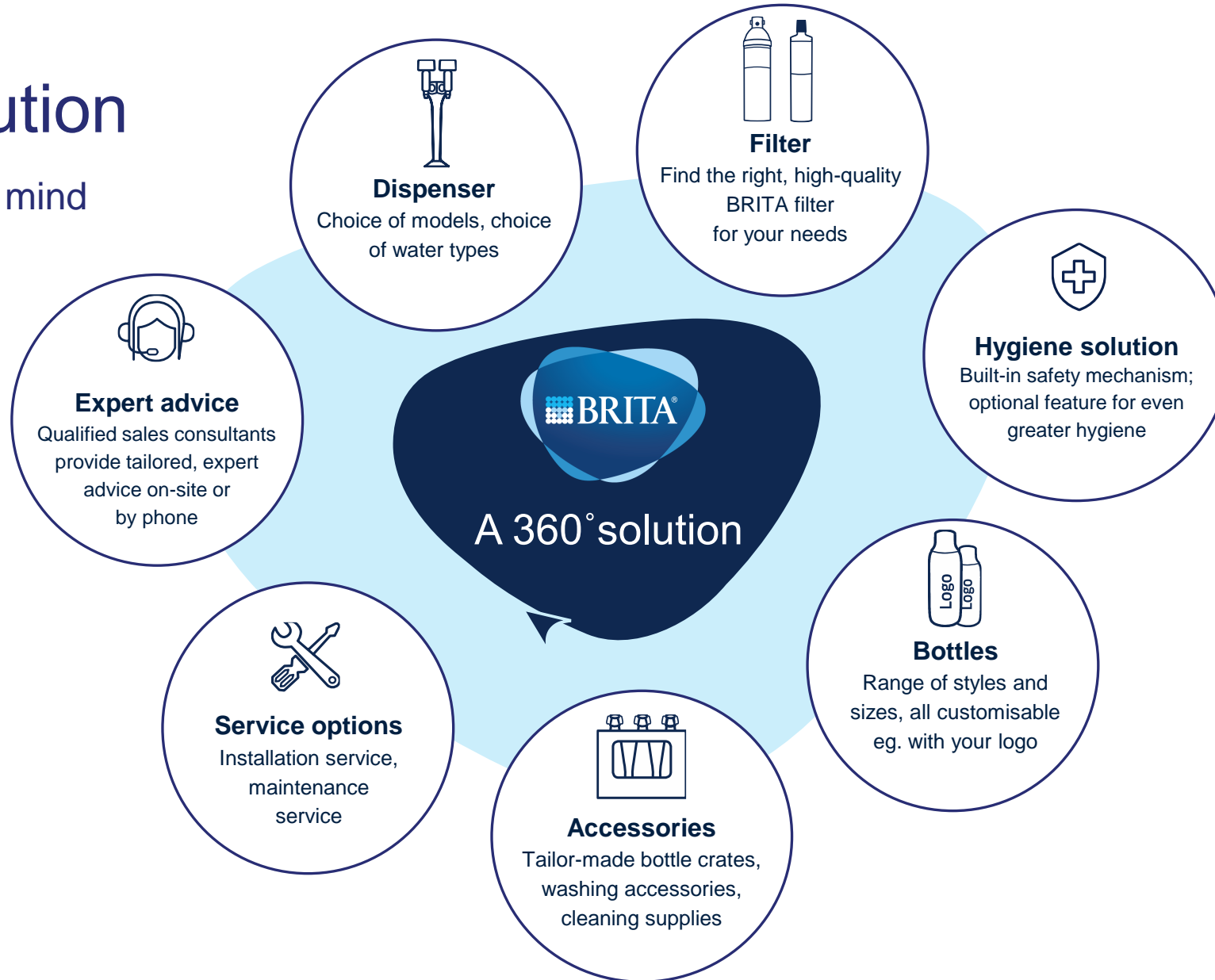
The food-grade quality and safety of BRITA water filter products are tested and verified by independent institutions



*applies to all materials that come into contact with water

A 360° solution

For total peace of mind

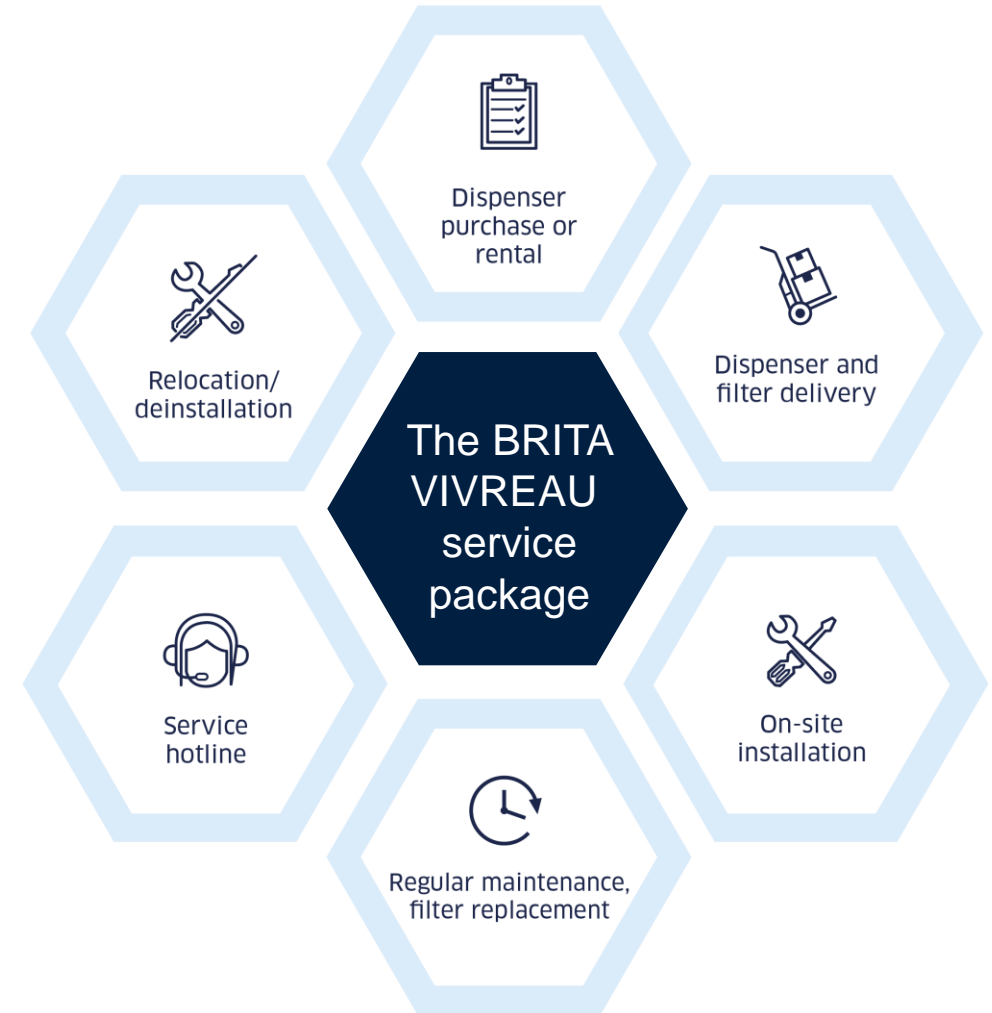


BRITA VIVREAU service package

Expert, reliable advice and assistance

Although our BRITA range of products is famously low maintenance, we do provide world-class customised service packages for your valuable source of hydration. That means any issues are seen to in no time, and that businesses can retain optimum performance of their water source resulting in complete peace of mind avoiding costly downtime and reactive maintenance costs.

These tailored and flexible service packages can include onsite installation and training through to bi-annual filter replacement and sanitisation. Along with BRITA's two-year warranty guarantee, you are always supported by a nationwide service network.



Expert Filtration Technology

Excellent water – an art and a science

To us at BRITA, water filtration is both an art and a science. With our proven filtration solutions, you can be sure we meet the highest hygiene, quality and environmental standards.

At BRITA, water is our passion. We have channelled over half a century's expertise into our BRITA filtration and treatment technologies, and into each and every one of our BRITA VIVREAU dispensers. From activated carbon to ion-exchange resins, pre-filters, post-filters, and more, you'll find effective filtration solutions for your specific needs.

Engineered to the highest quality to deliver unparalleled taste and performance, the BRITA VIVREAU's German-designed filtration system and European manufactured, provides more than just a glass of water.



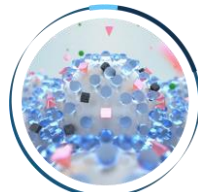
Activated carbon

Reduces substances that impair taste and odour



Ion exchanger

Reduces limescale and metals, e.g. lead



The right balance

Preserves minerals in water



It's all about the taste

Better water, enhanced well-being

The past 50 years of deep work and passion for expert filtration has ensured that BRITA has become synonymous with great tasting water.

It's not just pure tasting water that gets the BRITA treatment, even your daily cup of coffee and tea can be improved when you start with a purified base, allowing you to optimise and increase your daily hydration.

Good hydration is the basis for our body's metabolic processes and for our health. And staying hydrated is easier if water tastes good. That's why BRITA has a special department dedicated to taste.

Birgit Kohler

Head of BRITA's Organoleptic Department, certified water sommelier.



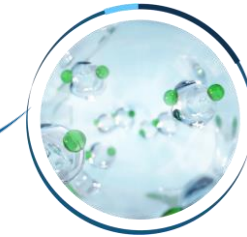
CLARITY Taste 100/100R

Water filter: Crystal clear water for cold drinks

The BRITA CLARITY Taste filter, with a capacity of 11,500, powerfully unites activated carbon technology with a pre-filter. This dynamic duo preserves minerals in water while removing unwanted substances, such as microplastics and chlorine. The result is crystal-clear water with a reliably refreshing taste. What's more, the filter protects the dispenser against downtime caused by fine particles, such as rust and sand, **meaning your refreshingly filtered water can be enjoyed without interruption.**

BRITA CLARITY Taste 100 filters are compatible with:

- VIVREAU Top 50/85
- VIVREAU ViTap
- VIVREAU Bottler



The right balance
Preserves minerals in water.



Activated carbon filtration Reduces substances that impair taste and odour.



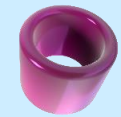
Pre-filter
Removes coarse particles.

Filter capacity:
Taste 100: 11,500 l

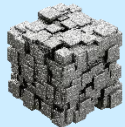
Perfect-tasting water
with ideal properties

Protects equipment
and therefore lowers dispenser maintenance costs

Benefits of BRITA CLARITY Taste



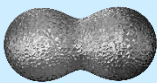
Reduces fine particles such as microplastic or sand



Reduces metals such as lead



Reduces pharmaceuticals, pesticides and hormones



Reduces chlorine taste and odour



Reduces organic impurities

CLARITY Taste 100/100R Technical data



Model	Taste 100	Taste 100R
Technology		
Water intake temperature	4°C to 30°C	
Ambient temperature for operation	4°C to 40°C	
Ambient temperature for storage/ transport	-20°C to 50°C	
Water inlet and outlet connection	CLARITY filter head JG 8mm	Everpure filter head
Operating pressure	2 bar to 8.6 bar	
Flow rate at 1 bar pressure loss	180 l/h	600 l/h
Operating flow range and associated pressure loss	40 l/h to 220 l/h 0.2 bar to 1.3 bar	40 l/h to 350 l/h 0.1 bis 0.4 bar
Nominal filter capacity	11,500 l	11,500 l
Operating position	horizontal or vertical	
Reduction performance		
Reduction of particles such as micoplastics or sand	≥ 0.5 µm (NSF 42, Class I)	≥ 2.0 µm (DIN EN 13443)
Reduction of metals such as lead	> 90 % (DIN EN 14898)	
Reduction of chlorine	> 90 % (DIN EN 14898, Class I) and > 50 % (NSF 42)	
Reduction of organic impurities such as benzene	> 90 %	
Reduces pharmaceuticals, pesticides and hormones such as naproxen, lindane, estrone	8,000 l (CLARITY Taste 100/100R)	
Dimensions (W x D x H)		
Filter system (filter head with filter cartridge)	68 x 68 x 338 mm	-
Filter cartridge	68 x 68 x 311 mm	86 x 88,6 x 317 mm
Installed dimensions (vertical installation with wall mounting bracket)	68 x 74 x 371 mm	-
Product number		
Filter cartridge (pack 1)	1020569	1033419
Filter head CLARITY (pack 1)	1024792	-
Certificates		

The food-grade quality and safety of BRITA water filter products are tested and verified by independent institutions



*applies to all materials that come into contact with water

Customisable BRITA bottles



Make your BRITA bottle your very own

Optional customised high-quality bottles are ideal for a variety of scenarios and are perfect for reinforcing your Brand.

The glass designer bottles come in a variety of sizes and styles, so you can find the right option for your organisation's needs.

Additionally, reusable bottles are a stand-out way to communicate your brand and commitment to the environment, it's something your employees, guests and patients will recognise and appreciate.





Customisable BRITA bottles

Make your BRITA bottle your very own

Optional customised high-quality bottles are ideal for a variety of scenarios and are perfect for reinforcing your Brand.

The glass designer bottles come in a variety of sizes and styles, so you can find the right option for your organisation's needs.

Additionally, reusable bottles are a stand-out way to communicate your brand and commitment to the environment, it's something your employees, guests and patients will recognise and appreciate.

Swing Bottle

Water type icons
still or sparkling



Hygienic swing stopper

Elegant design
for hospitality situations



Customisable area



BRITA Swing Bottle	
Sizes	425 / 750 ml
Material	Coated glass
Cap	<ul style="list-style-type: none"> • Colour: white/blue • Available with still or sparkling icons
Minimum order quantity	20 standard or customised BRITA Swing bottles
Customised print	Up to four colours (dishwasher safe)

Customisable BRITA bottles

Perfect all-rounders



Wave Bottle

Large bottle opening

Ideal everyday accompaniment for employees, patients and guests

Custom logo 360° printing

Customisable cap in two colours

BRITA Wave Bottle	
Sizes	600 / 750 / 850 ml
Material	Coated glass (750 ml) / Durable plastic (600 / 850 ml)
Cap	<ul style="list-style-type: none"> • Colour: white or grey • Customisable print on cap, with or without still/sparkling icons
Minimum order quantity	<ul style="list-style-type: none"> • 12 standard BRITA Wave bottles • 60 customised BRITA Wave bottles
Customised print	Up to two colours (bottle and/or cap, dishwasher safe)

Twist Bottle

Large bottle opening

Practical handling due to slightly curved shape

Water type icons still or sparkling

Customisable area

BRITA Twist Bottle	
Sizes	700 ml
Material	Coated glass
Cap	<ul style="list-style-type: none"> • Colour: grey • Available with still or sparkling icons
Minimum order quantity	20 standard or customised BRITA Twist bottles
Customised print	Up to four colours (dishwasher safe)

BRITA Accessories Technical data



BRITA-exclusive washing trays

1. Professional washing tray	<ul style="list-style-type: none"> • Size (W x H x D): 500 x 360 x 500 mm, 16 bottles • Compatible with: BRITA Swing 425 / 750 ml, BRITA Classic 750 / 1,000 ml • Openings custom-designed for the bottle neck
2. Professional washing tray incl. cap holder	<ul style="list-style-type: none"> • Size (W x H x D): 500 x 330 x 500 mm, 16 bottles • Compatible with: BRITA Twist 700 ml • Openings custom-designed for the bottle neck
3. Domestic washing tray	<ul style="list-style-type: none"> • Size (W x H x D): 485 x 180 x 485 mm, 25 bottles • Compatible with: all BRITA bottles (for BRITA Classic/Swing 750 ml and 1,000 ml it may be necessary to remove the top tray of the dishwasher) • Custom tines to hold the bottles, fits into the bottom tray of most domestic dishwashers



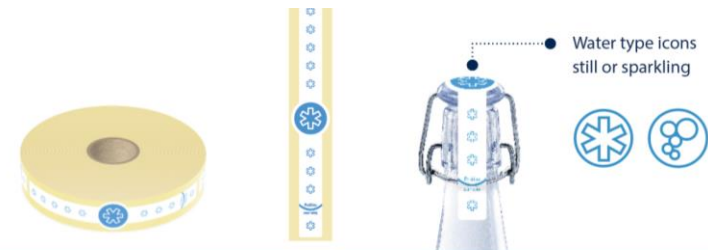
Storage crates

6-bottle crate	<ul style="list-style-type: none"> • Solid storage crate, stackable • Size (W x H x D): 300 x 380 x 200 mm, 6 bottles • Compatible with: BRITA Swing 750 ml, BRITA Twist 700 ml, BRITA Classic 750 / 1,000 ml, BRITA Lounge 350 / 750 ml
----------------	---



Further bottle cleaning equipment

1. Professional washing tray	<ul style="list-style-type: none"> • Size (W x H x D): 500 x 365 x 500 mm, 16 bottles • Compatible with: BRITA Swing 750 ml, BRITA Classic 750 / 1,000 ml
2. Professional washing tray	<ul style="list-style-type: none"> • Size (W x H x D): 500 x 295 x 500 mm, 25 bottles • Compatible with: BRITA Wave 600 / 750 / 850 ml, BRITA Twist 700 ml, BRITA Lounge 750 ml
3. Professional washing tray (small)	<ul style="list-style-type: none"> • Size (W x H x D): 400 x 280 x 400 mm, 16 bottles • Compatible with: BRITA Wave 600 / 750 / 850 ml, BRITA Twist 700 ml, BRITA Classic 500 ml
4. Professional washing tray	<ul style="list-style-type: none"> • Size (W x H x D): 500 x 325 x 500 mm, 25 bottles • Compatible with: BRITA Swing 425 ml, BRITA Classic 500 ml
5. Professional washing tray	<ul style="list-style-type: none"> • Size (W x H x D): 500 x 500 x 220 mm, 36 bottles • Compatible with BRITA Lounge 350 ml



Tamper seals

Still: 1015694 Sparkling: 1015695	<ul style="list-style-type: none"> • 1000 stickers per roll • Size (L x W) 170 x 200 mm • Compatible with BRITA Swing bottles
--------------------------------------	--

Bottler 102 Installation requirements

- The water dispenser may not be installed near direct or indirect heat sources (such as ovens, radiators, heaters, dishwashers, washing machines and so forth). Likewise, hoses and cables must not come into contact with heat sources.
- The water dispenser must be placed on a level surface that can bear the weight and is resistant to liquids and heat.
- The water dispenser may not be installed at locations where there is a possibility of sprayed water or jets of water.
- No objects may be placed on the water dispenser.
- There must be no explosive, corrosive or abrasive environment condition. Keep the water dispenser away from flammable objects.
- The water dispenser must not be subject to agitations and vibrations.
- The water dispenser is not suited for outdoor use.
- The water dispenser has to be installed in locations which have free access and can be monitored by trained personnel.
- The ambient temperature around the dispenser should not exceed 32°C.

1 Water connection:

A corresponding and functioning drinking water connection must be in the vicinity (to be provided by operator):

- Angle valve ¾" male preferably in stainless steel with shut-off valve in the cabinet underneath
- No more than 1 meter left or right of the drinking water system
- Water supply flow pressure: min. 2.5 bar, max. 4 bar
- The water dispenser may only be connected to drinking water lines that supply the drinking water in a quality in accordance with the drinking water regulations at the location of use

2 Electrical connection:

UK: 1 power socket 230 V / 13 A
Europe & Australia: 1 power socket 230 V / 10 A
no more than 1 meter either left or right of the system.

3 Waste water connection (optional):

Waste connection, trapped up stand to facilitate a ½" flexible pipe (to be provided by operator).

4 CO₂:

Foodgrade CO₂ bottle type E290 is to be provided by the operator (2 kg, 6 kg or short 10 kg).

The spatial volume of the installation room must be known. The max. permissible size of the CO₂ bottle is calculated from this. Contact customer service with questions about the CO₂ bottle size. The CO₂ bottle must be placed as far as possible from any heat sources and the ambient temperature should not exceed 32° C.

5 Kitchen worktop:

The dispensing font and the drip tray are to be integrated on the kitchen worktop. The kitchen worktop is not included in the delivery scope and to be provided by the operator.

Bottler 102 Preparation, Arrangement & Dimensions

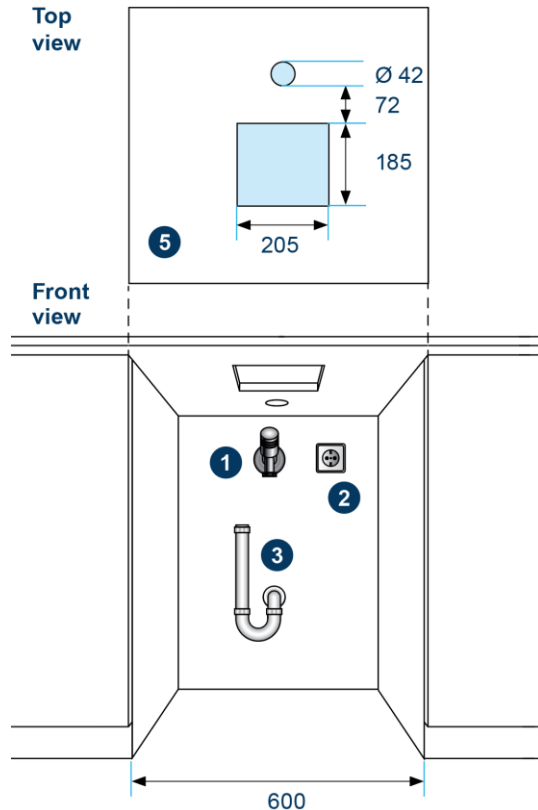
Preparation

Preparation of the furniture for installation.

Ventilation requirements:

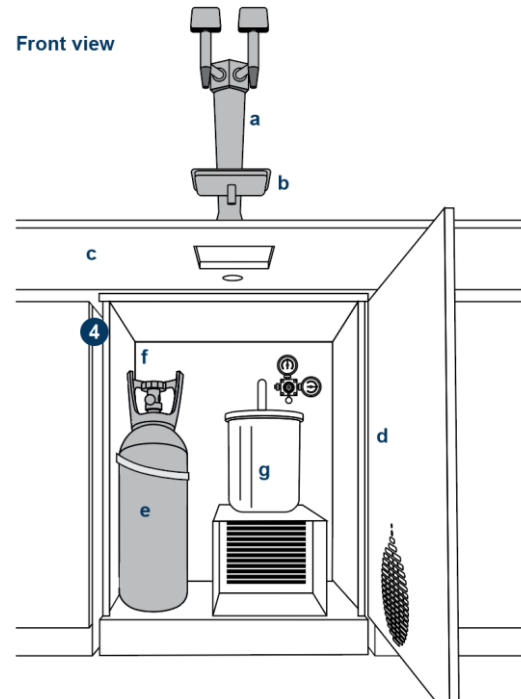
The water dispenser must be installed in such a manner that there is sufficient ventilation.

Never cover or block ventilation slits and cooling fins.



Arrangement

- a. Dispensing font "Still" and "Sparkling"
- b. Drip tray
- c. Kitchen worktop (not included)
- d. VIVREAU Bottler 102 cabinet
- e. CO₂ bottle
- f. CO₂ pressure regulator
- g. Waste water container



Dimensions

- a. Dispensing font
- b. VIVREAU Bottler 102



All dimensions in mm.

Bottler 104 Installation requirements

- The water dispenser may not be installed near direct or indirect heat sources (such as ovens, radiators, heaters, dishwashers, washing machines and so forth). Likewise, hoses and cables must not come into contact with heat sources.
- The water dispenser must be placed on a level surface that can bear the weight and is resistant to liquids and heat.
- The water dispenser may not be installed at locations where there is a possibility of sprayed water or jets of water.
- No objects may be placed on the water dispenser.
- There must be no explosive, corrosive or abrasive environment condition. Keep the water dispenser away from flammable objects.
- The water dispenser must not be subject to agitations and vibrations.
- The water dispenser is not suited for outdoor use.
- The water dispenser has to be installed in locations which have free access and can be monitored by trained personnel.
- The ambient temperature around the dispenser should not exceed 32°C.

1 Water connection:

A corresponding and functioning drinking water connection must be in the vicinity (to be provided by operator):

- Angle valve ¾" male preferably in stainless steel with shut-off valve in the cabinet underneath
- No more than 1 meter left or right of the drinking water system
- Water supply flow pressure: min. 2.5 bar, max. 4 bar
- The water dispenser may only be connected to drinking water lines that supply the drinking water in a quality in accordance with the drinking water regulations at the location of use

2 Electrical connection:

UK: 1 power socket 230 V / 13 A

Europe & Australia: 1 power socket 230 V / 10 A in base cupboard unit at high level, no more than 1 meter either left or right of the system.

3 Waste water connection:

The dripping water will be collected in the moveable drip tray, which is to be emptied once it is full. No waste water connection is needed.

4 CO₂:

Foodgrade CO₂ bottle type E290 is to be provided by the operator (2 kg, 6 kg or short 10 kg).

The spatial volume of the installation room must be known. The max. permissible size of the CO₂ bottle is calculated from this. Contact customer service with questions about the CO₂ bottle size. The CO₂ bottle must be placed as far as possible from any heat sources and the ambient temperature should not exceed 32° C.

Bottler 104 Preparation, Arrangement & Dimensions

Preparation

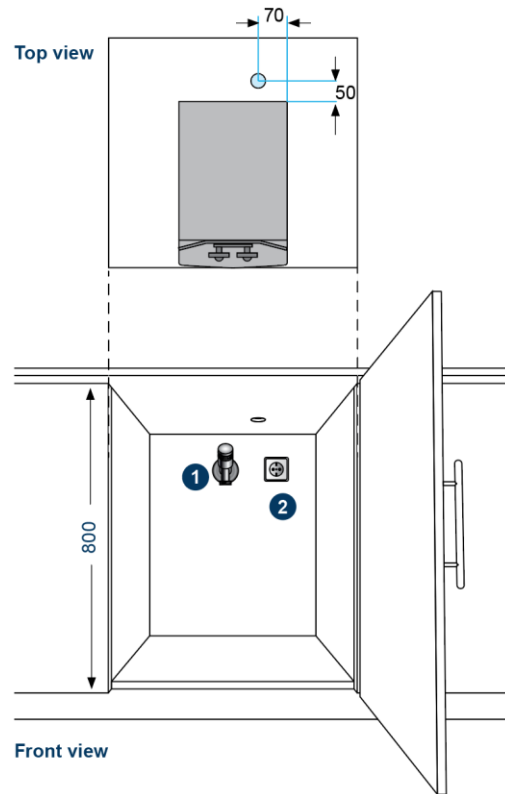
Preparation of the furniture for installation.

Ventilation requirements:

The water dispenser must be installed in such a manner that there is sufficient ventilation.

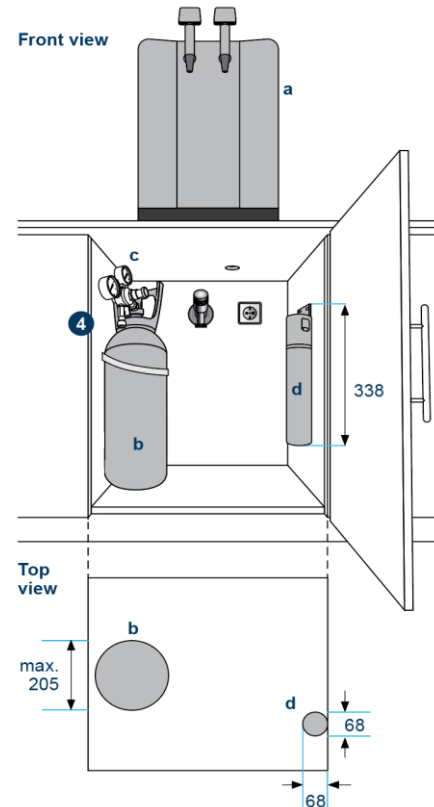
Never cover or block ventilation slits and cooling fins.

Hole dimensions to drill:
Hole diameter: min. 35 Ø



Arrangement

- a. VIVREAU Bottler 104
- b. CO₂ bottle
- c. CO₂ pressure regulator
- d. Filter: CLARITY Taste 100



Dimensions

- a. VIVREAU Bottler 104



All dimensions in mm.

Bottler 105 Installation Requirements

- The water dispenser may not be installed near direct or indirect heat sources (such as ovens, radiators, heaters, dishwashers, washing machines and so forth). Likewise, hoses and cables must not come into contact with heat sources.
- The water dispenser must be placed on a level surface that can bear the weight and is resistant to liquids and heat.
- The water dispenser may not be installed at locations where there is a possibility of sprayed water or jets of water.
- No objects may be placed on the water dispenser.
- There must be no explosive, corrosive or abrasive environment condition. Keep the water dispenser away from flammable objects.
- The water dispenser must not be subject to agitations and vibrations.
- The water dispenser is not suited for outdoor use.
- The water dispenser has to be installed in locations which have free access and can be monitored by trained personnel.
- The ambient temperature around the dispenser should not exceed 32°C.

1 Water connection:

A corresponding and functioning drinking water connection must be in the vicinity (to be provided by operator):

- Angle valve ¾" male preferably in stainless steel with shut-off valve in the cabinet underneath
- No more than 1 meter left or right of the drinking water system
- Water supply flow pressure: min. 2.5 bar, max. 4 bar
- The water dispenser may only be connected to drinking water lines that supply the drinking water in a quality in accordance with the drinking water regulations at the location of use

2 Electrical connection:

UK: 1 power socket 230 V / 13 A

Europe & Australia: 1 power socket 230 V / 10 A
no more than 1 meter either left or right of the system.

3 Waste water connection:

Waste connection, trapped up stand to facilitate a ½" flexible pipe (to be provided by operator).

4 CO₂:

Foodgrade CO₂ bottle type E290 is to be provided by the operator (2 kg, 6 kg or short 10 kg).

The spatial volume of the installation room must be known. The max. permissible size of the CO₂ bottle is calculated from this. Contact customer service with questions about the CO₂ bottle size. The CO₂ bottle must be placed as far as possible from any heat sources and the ambient temperature should not exceed 32° C.

NOTE: Points 1-3 need to be within 1m of appliance

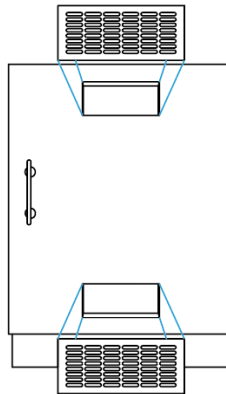
Bottler 105 Ventilation Requirements

The ventilation areas in the cabinet have to be prepared by the operator prior to the installation. Ventilation grids are available on request as accessories. Please contact your customer service for more details.

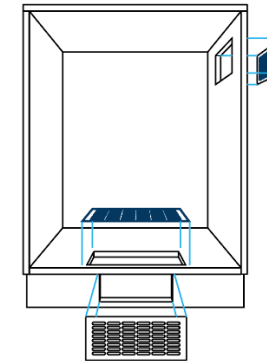
The cabinet may be ventilated in several different ways to prevent excessive heat build-up. The methods shown all take advantage of natural circulation by placing two grilles or cut-outs; one near the base and the other at the top of the enclosure.

Base/ kitchen cabinet back panel should be removed for better ventilation.

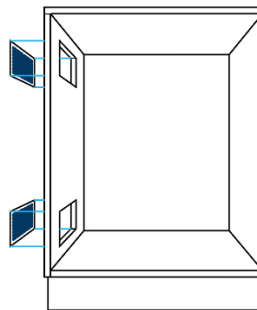
Front view



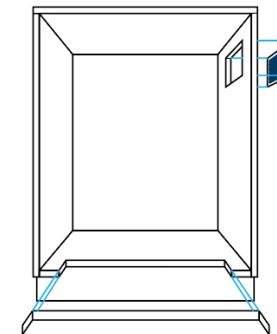
Front Ventilation
Cut ventilation grilles into a standard door panel.



Base Ventilation
Cut ventilation grilles into the cabinet's base panel and base plinth. Top ventilation will also be required in either the side panels or a cut out in the top of the door.



Side Ventilation
Cut ventilation grilles into the side of a standard 600 mm cabinet. The grilles may be fitted on either side allowing the ventilation into a free and unobstructed area.



Base Cut-Out
Ensure ventilation by removing a narrow section of the floor, immediately behind the door and trim with roll edging strip. Typical cut-out size must be not less than 280 mm wide x 35 mm deep.

Bottler 105 Preparation, Arrangement & Dimensions

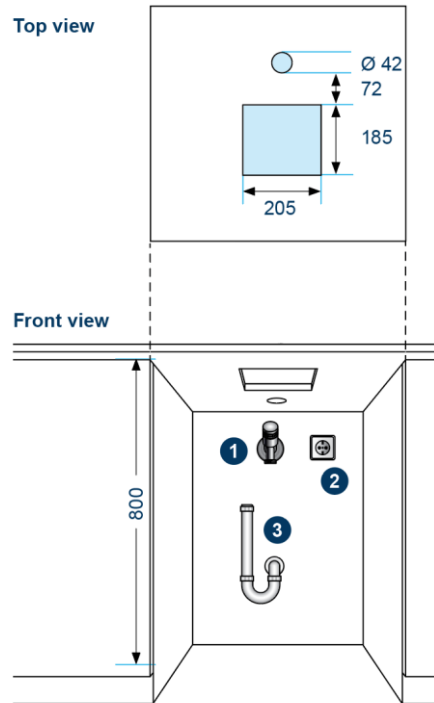
Preparation

Preparation of the furniture for installation.

Ventilation requirements:

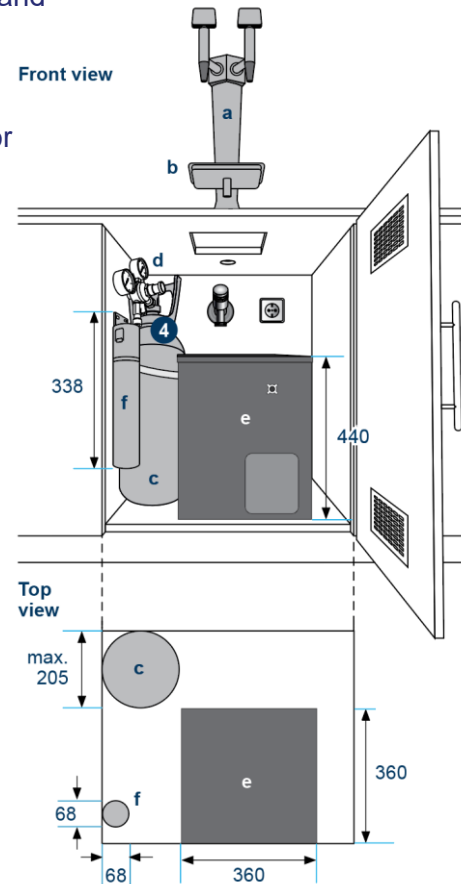
The water dispenser must be installed in such a manner that there is sufficient ventilation.

Never cover or block ventilation slits and cooling fins.



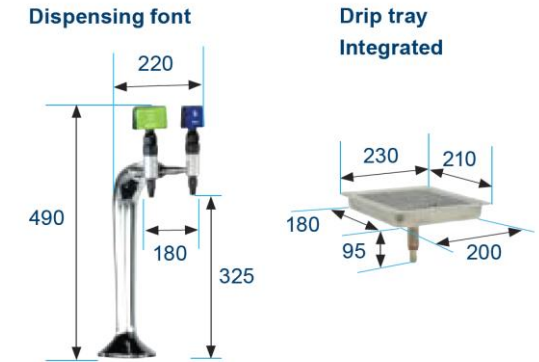
Arrangement

- a. Dispensing font "Still" and "Sparkling"
- b. Driptray (integrated)
- c. CO₂ bottle
- d. CO₂ pressure regulator
- e. Cooler-carbonator
- f. Filter: CLARITY Taste 100



Dimensions

- a. VIVREAU Bottler 105



All dimensions in mm.



For rental or sales enquires contact:

Tel: 1300 955 021 (Australia) | Tel: 0800 482 008 (New Zealand)

professional@brita.com.au | www.brita.com.au

